

Plato, Aristotle and their translations: a brief stylometric analysis

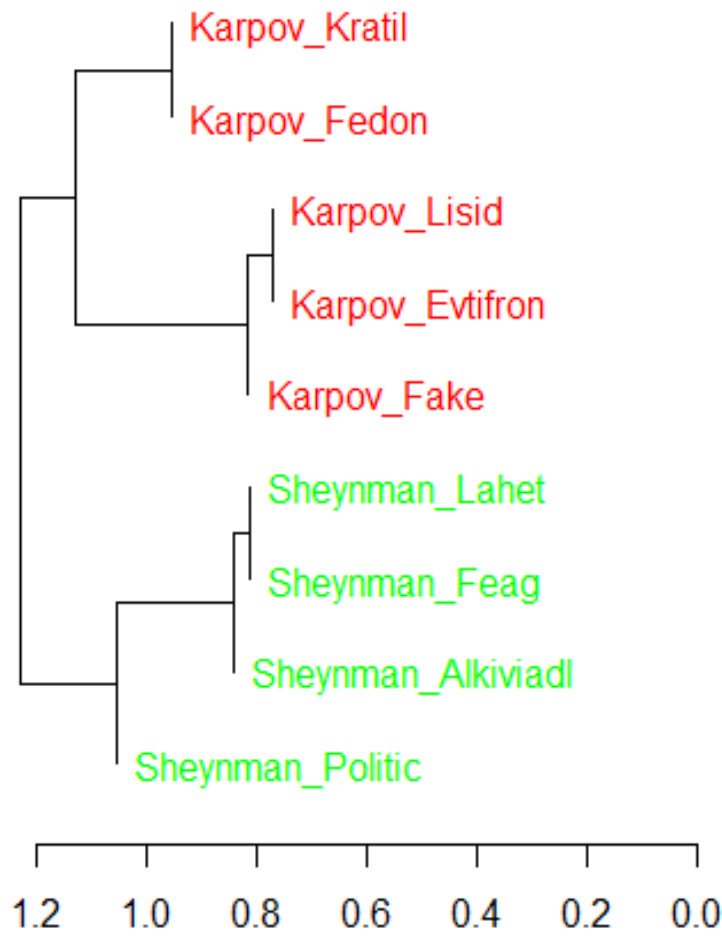
Kolganov Artyom, Konyaev Maxim,
Steshenko Anton, Dudakova Polina

- **Thesis 1: different translators have their own styles**

- We took several translations of Plato’s dialogues made by Karpov and Sheynman-Topshteyn

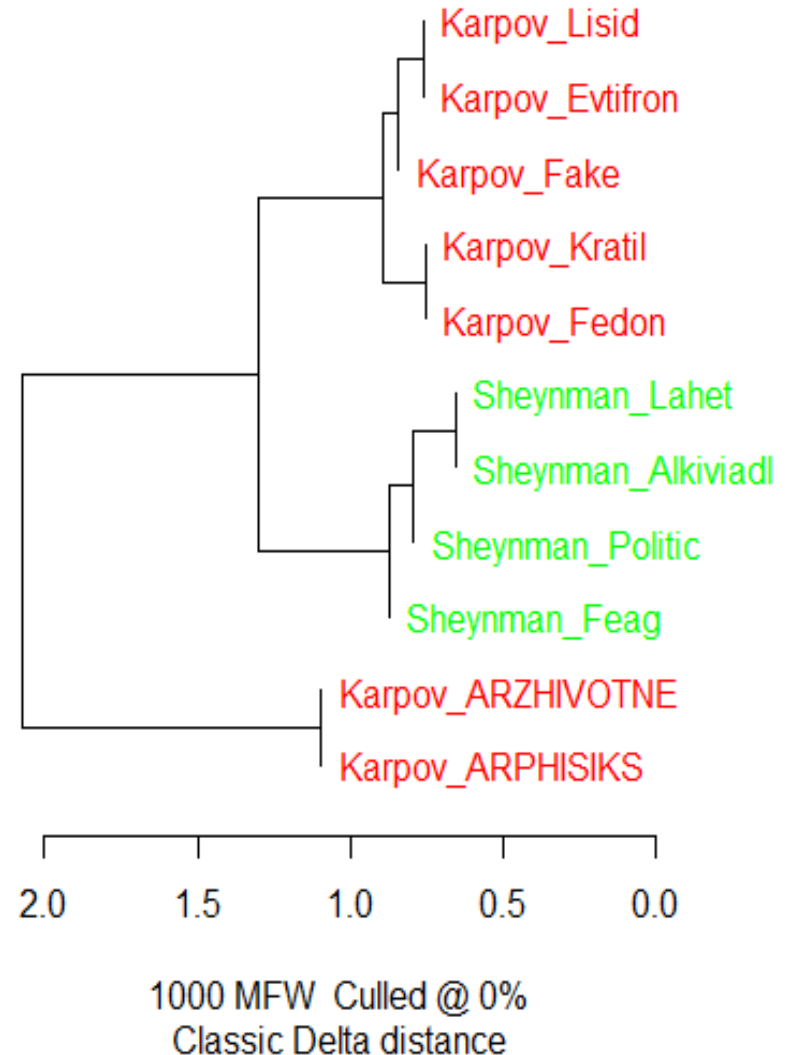
- Translations are clustered into 2 groups according to their authors; divisions within those groups are based on the texts’ volume

**Stylometry2
Cluster Analysis**



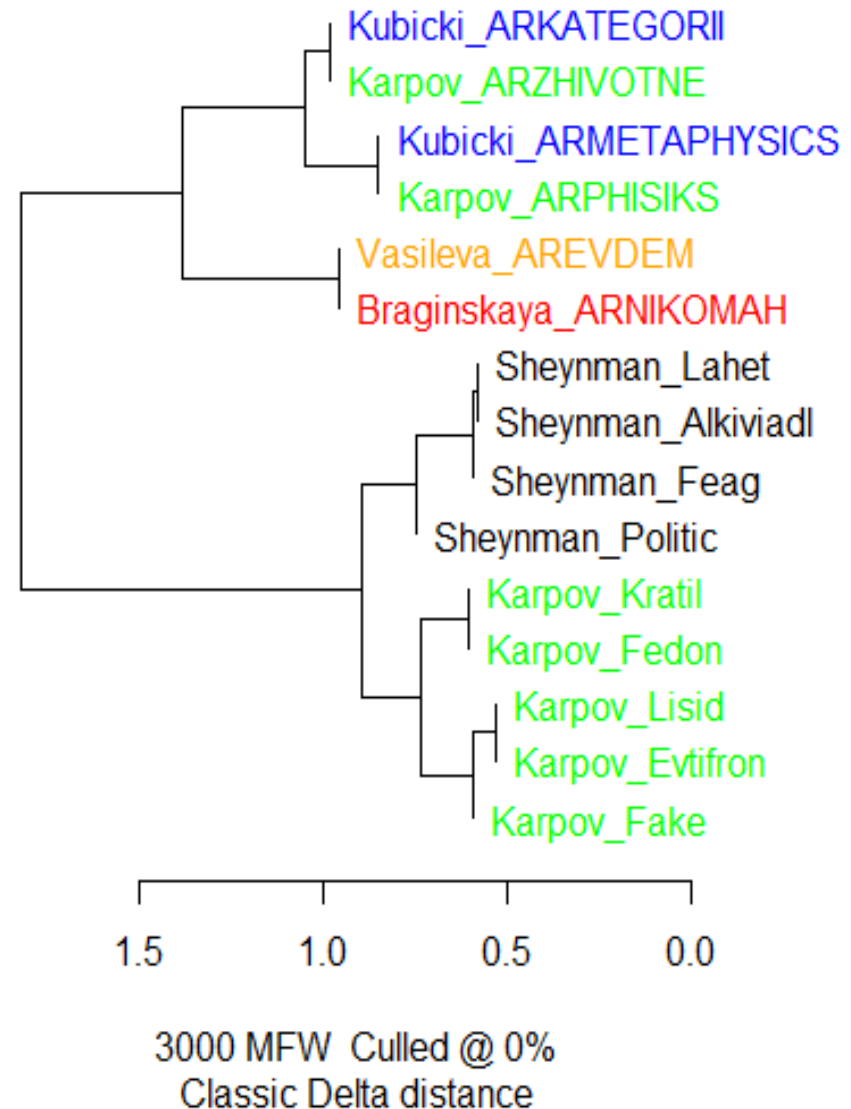
3000 MFW Culled @ 0%
Classic Delta distance

Stylometry2 Cluster Analysis



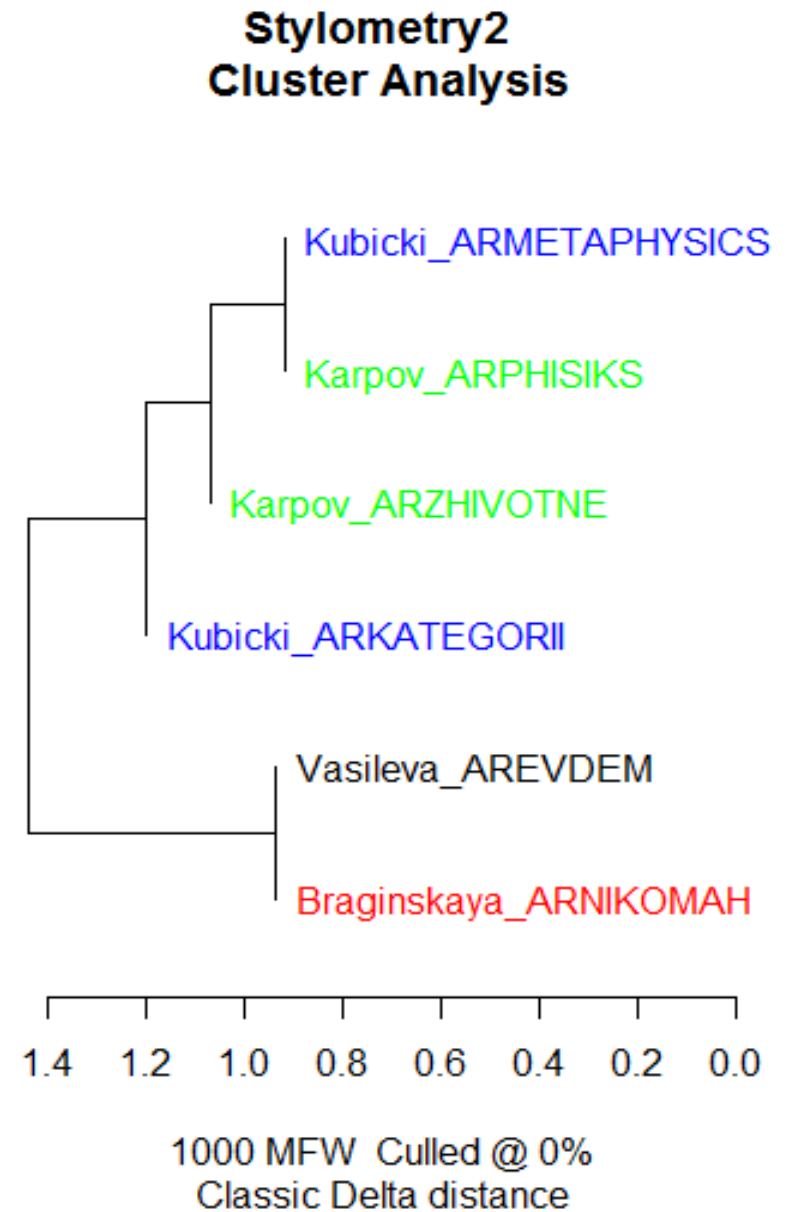
- Then we added two Aristotle's translations made by the same author (Karpov)
- Now there are two new main clusters divided by the original author (Plato and Aristotle); Karpov's translations are in two different clusters
- Inside the Plato cluster we still observe two groups of translations
- **Thesis 2: the stylistic features of the original author are expressed stronger than those of the translator**

Stylometry2 Cluster Analysis



- We added more translations of other Aristotle's texts
- All of them are attributed to A-cluster, but the principle of grouping inside the cluster is the **subject** of the original text (natural philosophy and ethics)
- **Thesis 3: the subject (if it can be identified) is more stylistically important than the translation**

- Back to thesis 1: Plato's texts were not divided by the subject, but only by the amount of words
- Aristotle's texts are divided by subject (not by the translator)
- The condition is that Aristotle's texts are focused on various themes with specialized terminology (unlike Plato's texts)



So,

author > theme > translator

Stylistic features of the **author**
influence the clusterisation

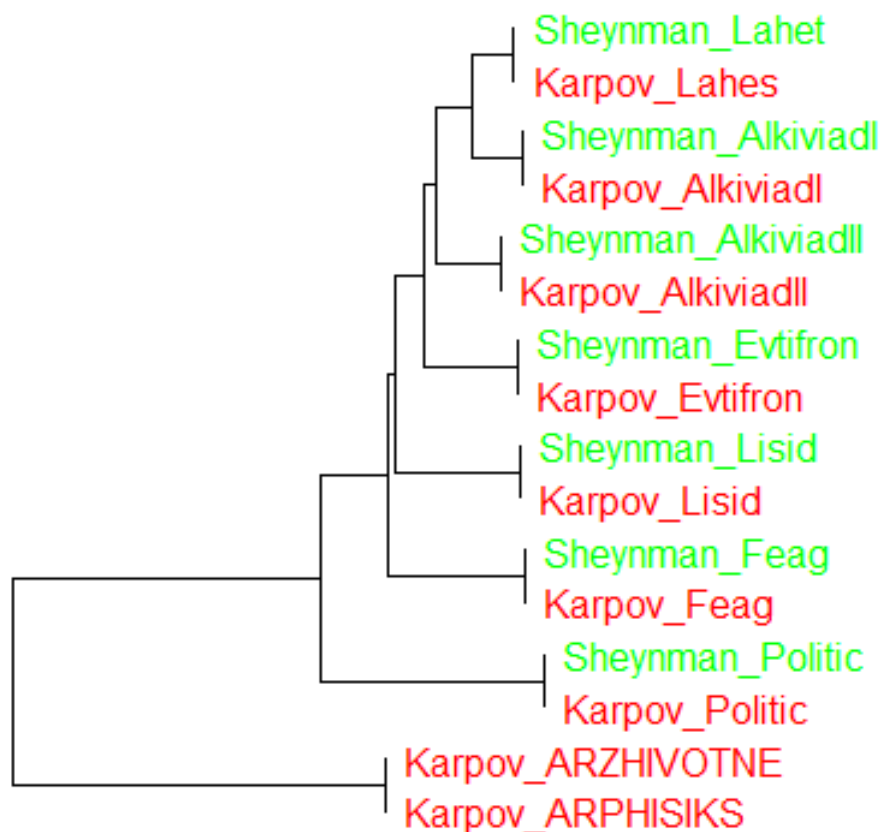
more than the **translator's** ones

Stylistic features of the **subject** of the
text influence the clusterisation

more than the **translator's** ones too

Stylometry1

Cluster Analysis



2.0 1.5 1.0 0.5 0.0

992 MFW Culled @ 0%
Classic Delta distance

